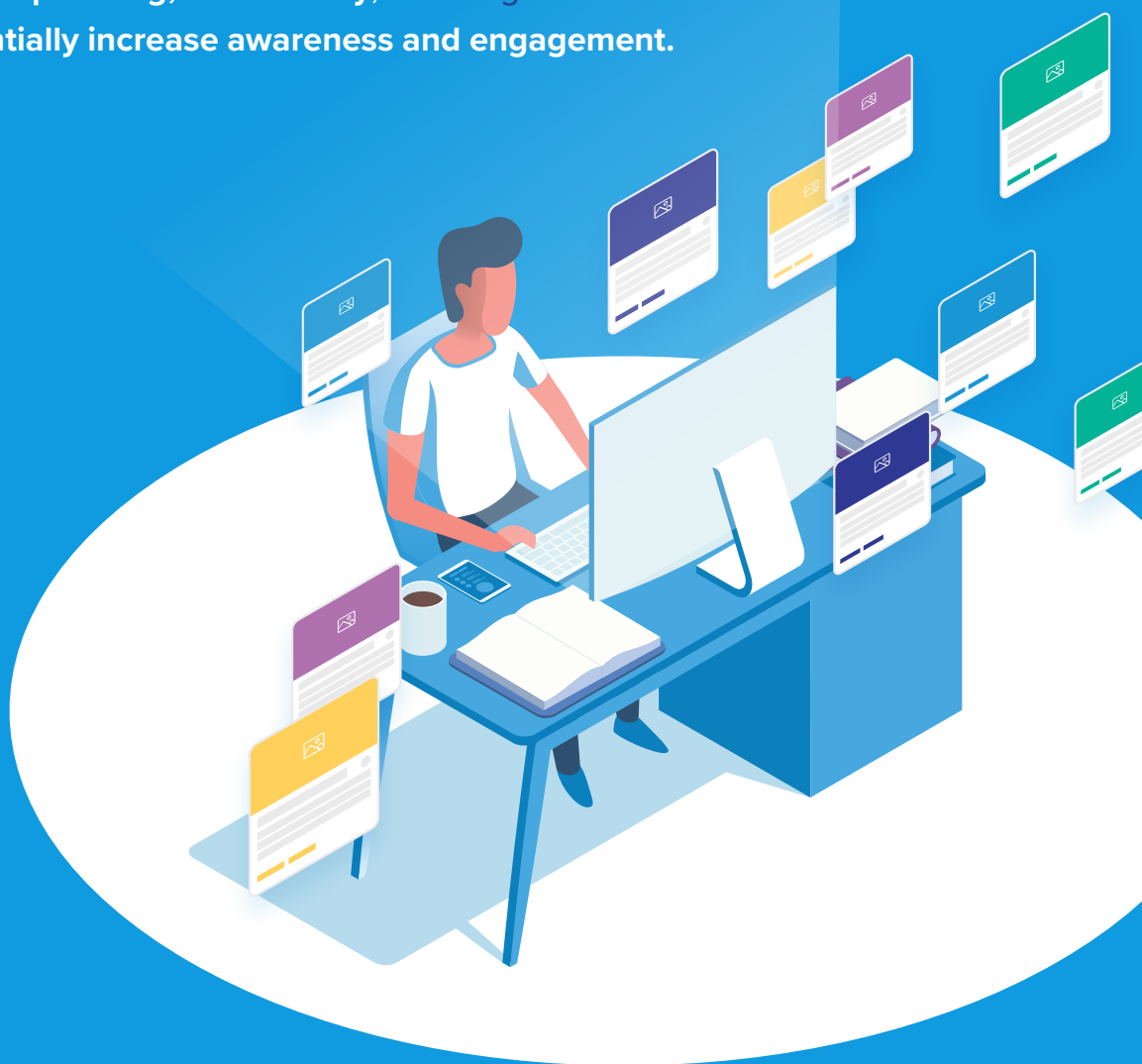




# Your Comprehensive Online Research Community

Capture your University's entire research ecosystem in one centralized, user-friendly, mobile-ready hub that facilitates transparency, strategic planning, & inclusivity, and heightens promotion to exponentially increase awareness and engagement.



# Scalable Program Solutions

Frustrated by the lack of transparency into your university's research ecosystem, especially with funding and research initiatives?

Are you concerned that underserviced and minor researchers are not aware or have access to all funding opportunities and research support available to them?

Has faculty stopped reading your research newsletters and updates?

Do you struggle when asked for reporting on internal funding or specific topics and find it difficult to know exactly what should be counted?





If so, it may  
be time for  
**InfoReady Scale.**

# Everything In One Place...

Scholarships and  
Fellowships

Grants (Internal and  
External)

Competitions

Visiting Scholars'  
Programs

Internal and External  
Faculty Awards

Resources and Tools

Reports and Publications

Seminars, Workshops,  
and Events

Lectures and Symposia

Policy, Handbooks, and  
Guides, Tutorials,

Professional  
Development  
Opportunities

Associations, Clubs, and  
Organizations,

Community Resources  
and Programs

Displays, Presentations,  
Exhibitions

Performances, Videos,  
Photos, Tours

And It Integrates with  
Legacy Tools

## Transparency & Strategic Planning

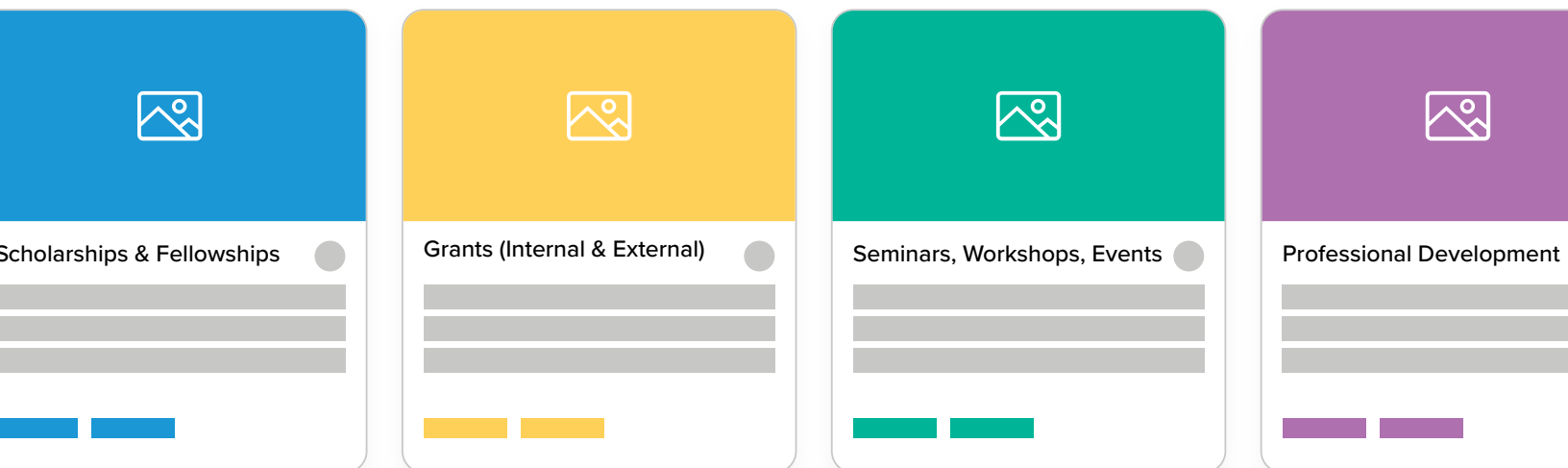
Research universities use InfoReady Scale™ to gain the necessary global transparency into their entire research ecosystem.

Chief Research Officers start using InfoReady Scale™ to aggregate their internal funding and research initiatives in order to measure the impact they are having and to safeguard their investment appropriately.

Next, they add their legacy cross-campus tools and resources like seminars, external funding, grant writing workshops and consultation, and other research support.

This creates the cohesive online research community that faculty and researchers, stakeholders, and administrators across the entire research ecosystem use...a one-stop-shop to discover and immediately act on what matters the most.

Think of how much is gained from having your entire research ecosystem in one place... from **internal and external funding** opportunities and **competitions**...to all the supporting events, training resources, and programs like **lunch and learns, grant writing workshops, visiting scholars' lectures, and faculty awards**...and even access to **legacy systems** – all in one place. Having everything together makes tracking and reporting possible.



## With InfoReady Scale™ you'll:

- Have one centralized and aggregated online hub for all research investments, initiatives, and supporting resources so you can **count and safeguard your research investments**.
- Eliminate duplication by seeing everything side-by-side. This opportunity to **prioritize how investments are being spent** ensures that you are supporting what the university values most.
- Know exactly how much research investment and activity is supporting the university's greatest achievements and strategic initiatives. And **quickly recognize opportunities** to refocus research support and funding where needed.
- **Measure** interest and follow-through – maybe for the first time.
- Create an online research community (marketplace) that **breaks down barriers** so researchers can see things from a different perspective, and **fosters inspiration** from something that's totally outside of a researcher's discipline.
- Create the ideal environment to produce the best research outcomes. Having stakeholders and researchers all in one place online creates community...Plus, cross-promotions increase overall awareness of all research investments and initiatives and instantly build an online research community that **supports and fosters inter-disciplinary collaboration**.
- Enjoy **painless reporting** because now you'll have true transparency and visibility into university research investments and support activities.
- Have **answers at your fingertips**. By making reporting easy you'll be able to quickly report on how you are doing – whether it's answering questions from congress or evaluating a well-established program, now you'll have the data at your disposal.
- Have happy administrators because they'll have **one simple, streamlined process** for promotion and faculty awareness.
- Have happy faculty and researchers who are confident knowing they'll **discover everything** available to them with one-stop.

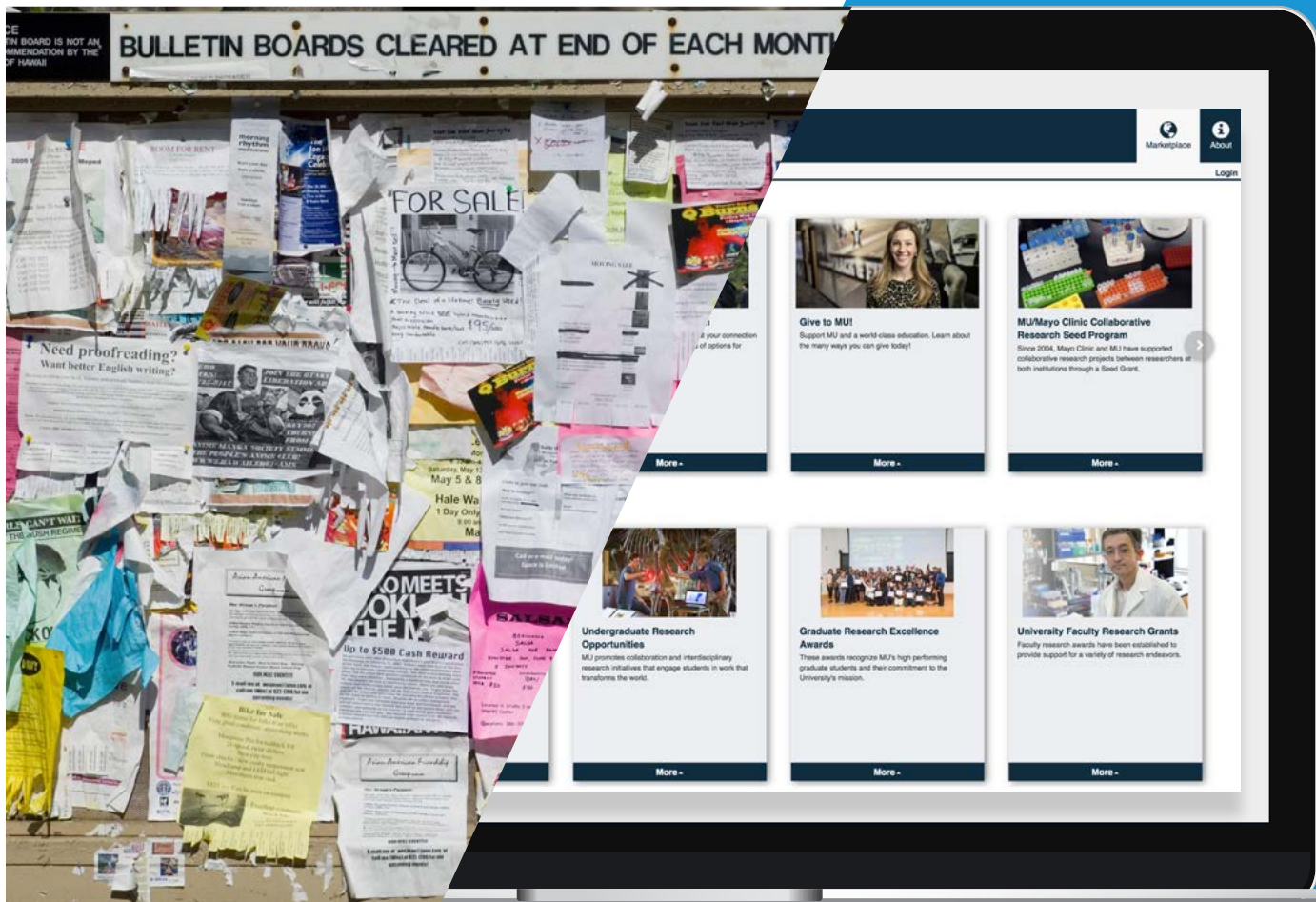
# Inclusivity – Broaden Awareness & Engagement

Diversity, equality, and inclusivity are critical initiatives for research universities. Chief Research Officers tell us they like InfoReady Scale™ because all faculty, staff, and stakeholders both internally and externally have equal access and awareness... this is especially important for underserved and minority audiences.

## With InfoReady Scale™ you'll:

- **Evaluate** your **reach** and **engagement with special audiences**. Having the tools to make data-driven decisions about inclusivity makes all the difference.
- Bring all your **research funding and initiatives into the light of day** in terms of promotions, faculty awareness and access, eligibility requirements, tracking/reporting outcomes, and more so that all faculty and researchers have equal access.
- Encourage cross-promotion of anything and everything research-related—investments, initiatives, activities, research support, success stories and more—to create excitement, build a strong online research community, **foster unexpected inspiration**, and **exponentially increase traffic**, improving awareness, and driving engagement all of which lead to better results.
- Improve discoverability and access to help researchers **find relevant opportunities and take immediate action**.
- Watch it **grow organically** as stakeholders and administrators across the university begin to add their competitions, programs, and events.
- **Be ready when researchers are seeking** research resources with a platform that works 24/7 and keeps information current with dynamic updates.
- Entice users with an engaging, friendly, and familiar marketplace style interface that **makes discovery and finding** so much **easier and intuitive**...and more **effectively captures the researcher's attention** than one-off brochures, posters, and email blasts. You know what works because you track and measure it.

# Make Discovery So Much Easier and Intuitive With InfoReady Scale.





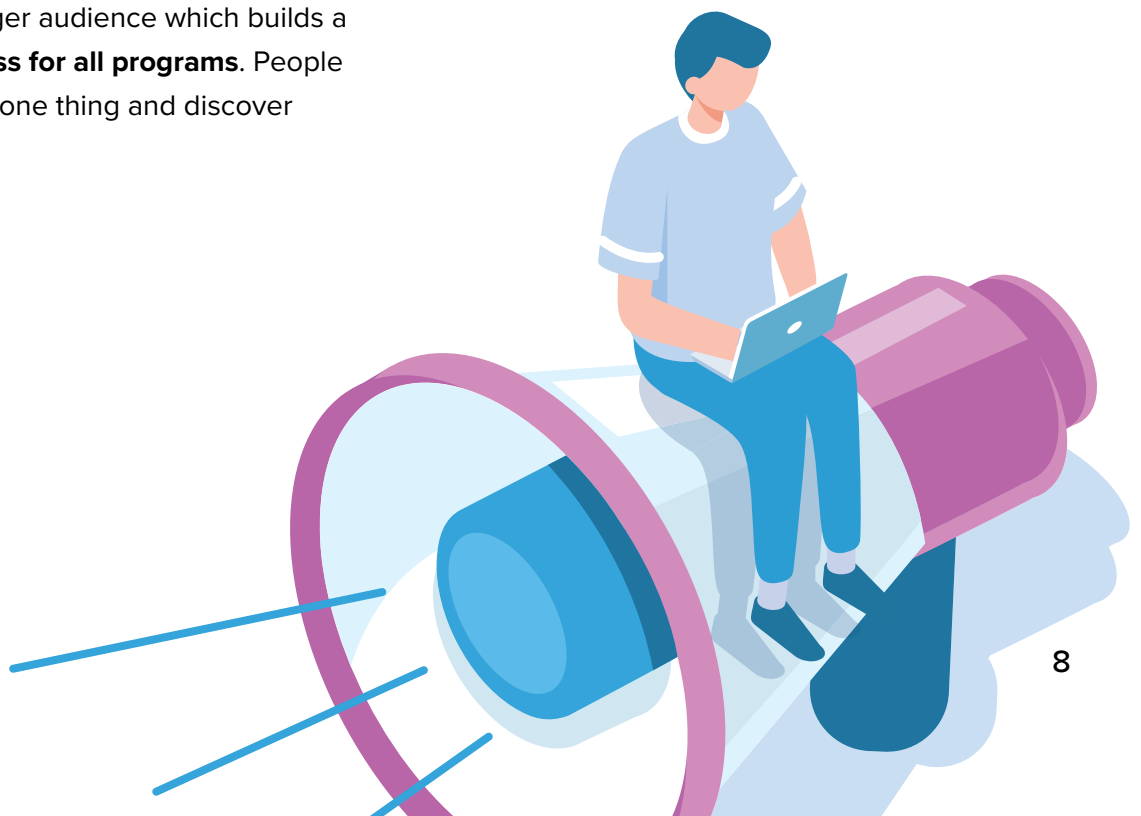
# Effortless Promotion

InfoReady Scale™ is the easiest way to keep both your internal and external audiences informed and coming back to see what else is going on.

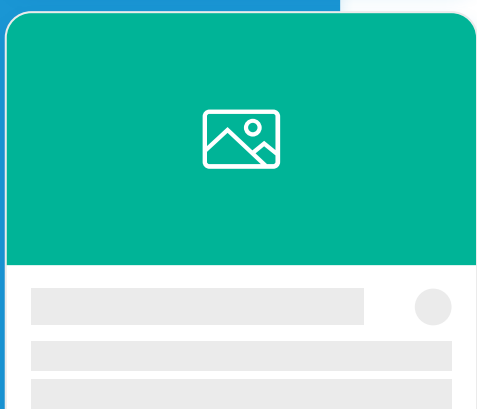
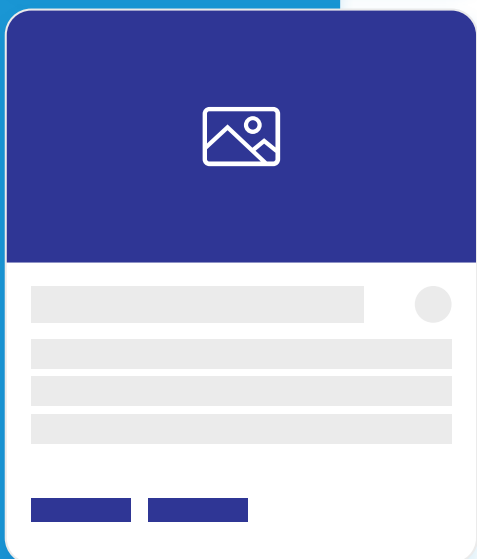
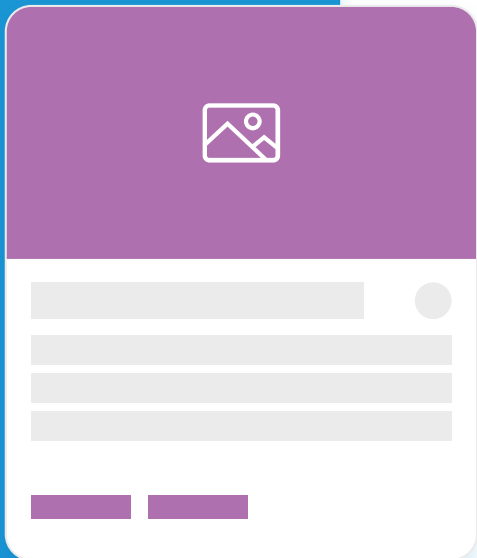
Chief Research Officers can't stop talking about how easy InfoReady Scale is making their job.

## With InfoReady Scale™ you'll:

- **Reach the largest, broadest audience** possible by centralizing around a single access point
- Always drive traffic to your site because your **audience keeps coming back** to find the most current information. With dynamic updates you can refresh your content regularly.
- Reduce the burden of program promotion and at the same time **dramatically increase its effectiveness**. An online research community fosters inclusivity and generates a significantly larger audience which builds a **greater awareness for all programs**. People come looking for one thing and discover another.
- Eliminate the noise and communication chaos by **streamlining the announcement and promotion process** for all research activities. Now everyone knows where to find what they need **when they want it** which significantly improves engagement.
- Meet users where they are and drive engagement with the mobile-friendly interface. It allows researchers **access from anywhere at any time** -- when they are actively engaged and seeking information.







## How it Works

Set-up your online research community marketplace in minutes.

With the push of a button, your InfoReady Review items populate the marketplace and you're ready to go. No IT development required. Enjoy the peace of mind that comes with using an established, SaaS platform from a company you trust.

Now let stakeholders and administrators know there's a place to add all the other programs and services that support university research investments. In record time you'll have your entire research ecosystem online in one place.

Ensure your tracking is in place and your reporting is ready to go.

Let everyone know! Broadcast the exciting news to faculty, staff, researchers, external and internal stakeholders and watch the traffic start.

## 1. Identify The Opportunity

Internal Grants & Competitions Portal

Log In Help

HOME CALENDAR

### Awards, Grants, and Limited Submission Competitions

The Office of Research & Economic Development (ORED) offers a variety of internal grants that support faculty research across all levels and disciplines. These include travel grants, seed funding for new and innovative research initiatives, and summer stipend grants for junior faculty. ORED also manages Council on Research awards (Distinguished Research Master and Rahnemaker awards), as well as Limited Submission Competitions for grant agencies that limit the number of applications that can emanate from LSU.

### Submission Portal

The Office of Research & Economic Development uses this submission portal to manage the following internal grants programs and pre-submission reviews:

- Faculty Research Grants
- Limited Submission Competitions
- Faculty & SEC Travel Grants
- Equipment Repair Funds
- Waiver Requests

**Award Cycles:**  
**Open:** The competition is open and accepting applications.  
**Closed:** The internal deadline for applications and internal pre-proposals has passed. Applications are not being accepted.  
**Annual Cycles (AY):** Applications will be accepted during the academic year until funds have been fully committed.

**Limited Submission Competitions**  
**Available:** The internal deadline has passed, but there were no submissions. Proposals will be accepted on a first-to-notify basis.  
**Pre-Proposal:** The internal deadline has passed and there were enough submissions to call for a full internal competition.

**Accessibility**  
[Provide Website Feedback](#)  
[Accessibility Statement](#)

Support Documents

Search:

Title	Due Date	Category	Award Cycle
Equipment Repair Fund	05/31/2019	Equipment Repair	AY 2018-2019
Equipment Repair Fund (Federal Projects)	05/31/2019	Equipment Repair	AY 2018-2019
Faculty Research Grant	02/01/2019	Internal Funding Opportunities	AY 2018-2019
[NSH] Postbaccalaureate Research Education Program (PREP) (R2)	01/24/2019	Limited Submission Competitions	Available
[NSP] NJSE / Professional Formation of Engineers: Revolutionizing Engineering Departments (NJSE/PFE: R2)	01/18/2019	Limited Submission Competitions	Available
[NSP] Materials Innovation Platforms (MIP)	01/29/2019	Limited Submission Competitions	Available

## 2. Enable It For The Marketplace

### Assign Co-Administrators

Super Administrators can manage any Competition. If you would like an Administrator to be able to manage this Competition, too, click the Add Administrator button to assign a Co-Administrator. You can assign more than one, and remove them at any time.

[Add Administrator](#)

### Promote the Competition

Your InfoReady Review site is integrated with an InfoReady Marketplace at <https://inforeadybyline.com>. To reach a wider audience, you can promote this competition in your organization's Marketplace.

☒ Enable Marketplace for this competition

Click "Configure Marketplace" to begin creating your tile and optional "Learn More" page.

[Configure Marketplace](#)

### Finalize Your Competition

You are almost done setting up your Competition! Select from one of the options below and save or launch your Competition.

Competition Options: Save As Draft ?

[Finish](#)

[Previous](#)

## 3. Let Everyone Know!

Opportunities & Activities

About Research Ready

Opportunities Search

Login

### RECENTLY ADDED

#### Faculty Workshops

Learn about requirements and effective strategies for grant writing and research

**When** Year-round  
**Where** 129 Himes Hall  
**How Much** Free

[More -](#)

#### LSU Science Café

Join us for our monthly gathering to hear about the latest in research, scholarship and creativity activity at LSU.

**When** Last Tuesday of every month  
**Where** The Varsity Theatre  
**Cost** It's free.

[More -](#)

#### SPIN Database

Search the SPIN database for federal, state, international and foundation-based grant opportunities.

**Eligible Applicants** All LSU faculty and staff  
**Login** Use your LSU email address and password

[More -](#)

#### Curated Grant Opportunities

An actively curated list of grant opportunities that are targeted at LSU strengths and strategic priorities.

**Eligible Applicants** LSU Faculty/Staff/Students

[More -](#)

#### Faculty Travel Grant - Spring 2019

Matching funds of up to \$750 to support travel to conferences, site-specific data gathering, and federal agencies.

**Eligible Applicants** Tenure-Track or Tenured Faculty  
**Deadline** 2 weeks before travel dates  
**Required Materials** Letter of invitation or acceptance to peer-reviewed event, matching funds from dean or department chair, project abstract.

[More -](#)

### GRANT RESOURCES

#### SPIN Database

Search the SPIN database for federal, state, international and foundation-based grant opportunities.

**Eligible Applicants** All LSU faculty and staff  
**Login** Use your LSU email address and password

#### Curated Grant Opportunities

An actively curated list of grant opportunities that are targeted at LSU strengths and strategic priorities.

**Eligible Applicants** LSU Faculty/Staff/Students

#### Faculty Travel Grant - Spring 2019

Matching funds of up to \$750 to support travel to conferences, site-specific data gathering, and federal agencies.

**Eligible Applicants** Tenure-Track or Tenured Faculty  
**Deadline** 2 weeks before travel dates

#### Equipment Repair Fund

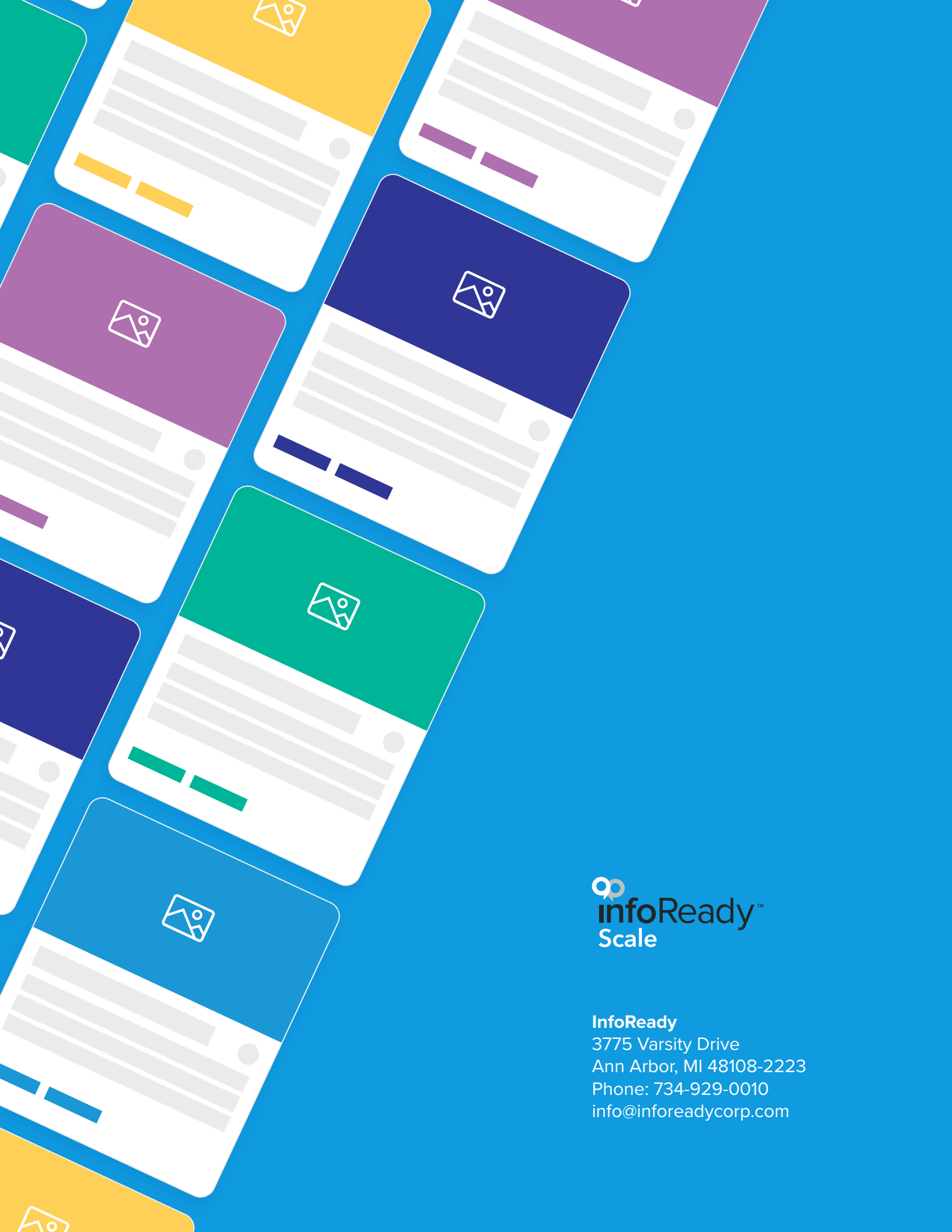
This program is a matching fund to assist departments with the repair of critical equipment used for research and scholarship.

**Eligible Applicants** Faculty may receive funding no more than twice per year.  
**Limitations** Funds can only be used to repair

# Want to know more? Schedule a demo today.

[www.inforeadycorp.com/scale](http://www.inforeadycorp.com/scale)





**InfoReady**  
3775 Varsity Drive  
Ann Arbor, MI 48108-2223  
Phone: 734-929-0010  
[info@inforeadycorp.com](mailto:info@inforeadycorp.com)